

Submersible drainage pumps with cutter

TERAL

KO

50Hz



TERAL INC.

Applications

- Sewage storage tanks and kitchen drainage of buildings, hotels, theaters, hospitals, condominiums, schools, etc.
- Combined treatment of sewage and human waste
- Drainage of sewage and waste of hog farms/livestock farms
- Drainage of sewage and waste of food processing plants
- Drainage of other types of sewage and waste containing solids

Features

- ① No tangling or clogging of foreign matter by adoption of cutter mechanism and non-clogging type impeller.
It has a mechanism to prevent water from entering the motor.
- ② A built-in motor protector prevents motor burnout due to overload, constraint or open phase.
- ③ KOA model and KOT model are automatic operation built-in types. KOA model performs independent automatic operation while KOT model performs automatic alternate/parallel operation.

Description of types

100 KO - 5 7.5

① ② ③ ④ ⑤

- | | |
|--|---|
| ① Nominal diameter | ③ Frequency 5: 50Hz 6: 60Hz |
| ② Model KO: Non-automatic
KOA: Automatic
KOT: Automatic alternate/
parallel operation | ④ Output
⑤ Detachable device
Blank: None
-C: C-type detachable device.
-S: SEC-type detachable device |



* Please note that some of the devices in the photo may differ from actual devices in coating color, etc.

Standard specifications/Special specifications

— : Not available

Pumping liquid	Liquid quality	Waste water, Miscellaneous wastewater, Sewage	
	Liquid temperature	0 - 40°C	
Max. solids size for passage		Diameter: 40% - 60% of nominal diameter (nominal diameter 50, 65) String-like solids and spherical solids of 53mm in diameter (compliance with public building work standard specifications) (nominal diameter 80mm or more) Length : 300% or less of nominal diameter	
	Specifications	Standard specifications	Special specifications
Structure	Impeller	Non-clogging type semi-open with cutter disk	—
	Shaft seal	Mechanical seal	—
Material	Impeller	FC200 : 5.5kW or less of nominal diameter 65/80 and nominal diameter 100 FCD450: 7.5kW - 18.5kW of nominal diameter 65/80	—
	Cutter disk	FCD450	—
	Shaft	SUS403 : 3.7kW or less SUS420J ₁ : 5.5kW or more* ¹	SUS420J2: 5.5kW or more
	Casing	FC200	—
	Detachable device* ²	Cast iron (chain, shackle, anchor bolt:SS400)	Stainless steel(including chain, shackle, anchor bolt) Hanging chain: SUS304(chain, shackle only) Hanging chain and others: SUS304(chain, shackle, anchor bolt only)
Motor	Type	Dry submerged	—
	Power source	3-phase 200V	3-phase 380V/400V/415V : 3.7kW or less 3-phase 380V/400V : 5.5kW or more
	Synchronous rotation speed	1500min ⁻¹	—
	Protective device	Automatic reset type auto-cut: 7.5kW or less Thermal protector* ³ : 11kW or more	—
Cable	Power cable	VCT 4 cores: 7.5kW or less VCT 3 cores+4 cores: 1kW, 15kW 2PNCT 3 cores+4 cores: 18.5kW	—
	Control cable	VCT 2 cores: 11kW or more	—
	Length	10m	20m-30m
Mechanical seal		Double mechanical seal: 3.7kW or less Tandem mechanical seal: 5.5kW or more Material: Pump side: SiC vs SiC Motor side: Ceramic vs Carbon	—
Lubricant		Turbine oil VG32	Liquid paraffin
Piping connection		JIS10K thin type flange	—
Painting	Paint color	Munsell 7.5R4/14	—
	Painting type	Acrylic alkyd resin	Non-tar epoxy resin

* Please note that in case of special specifications, the assembly drawing, etc., may differ from the standard drawing.

* 1 The shaft material shall be changed to comply with Ministry of Land, Infrastructure and Transport Public Building Construction Standard Specification.

* 2 It is possible to attach only the sliding guide and chain.

* 3 b-contact output

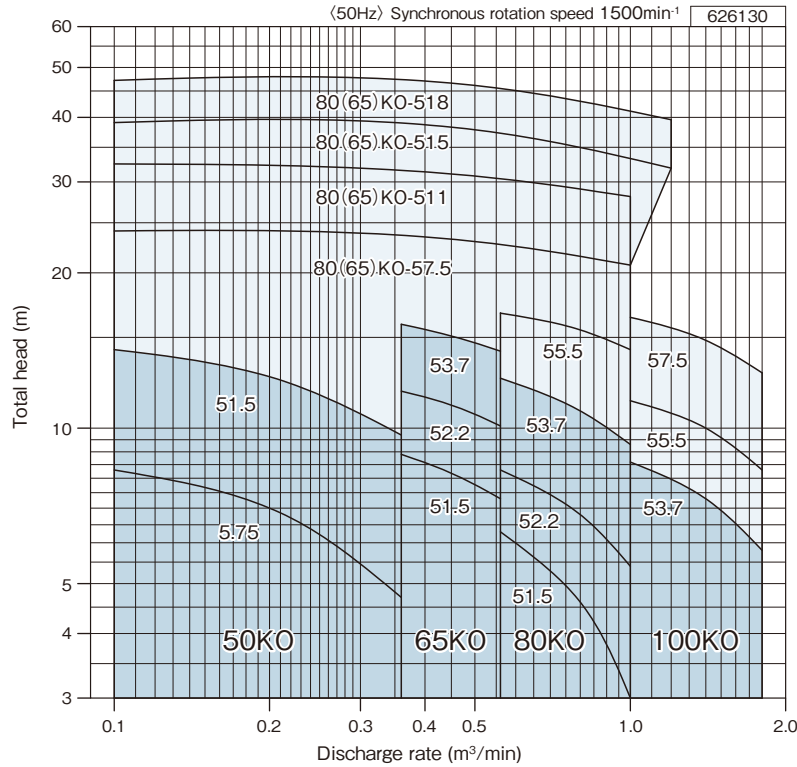
Standard accessories

Cable	10m
Companion flange (packing, bolts and nuts included)	1 set
Ground nameplate	1
Threaded flange for changing nominal diameter	1
(In case of 7.5kW - 18.5kW of nominal diameter 80)	

Special accessories

Sluice valve, check valve
Check valve for sewage
Float switch

Selection chart



* For dark blue area, automatic KOA model and automatic alternate/parallel operation KOT model are also available.

Specification table

Operating system	Type	Nominal diameter mm	Output kW	Specifications	
				Discharge rate m³/min	Total head m
Non-automatic	50KO-5.75	50	0.75	0.22	6.7
	50KO-51.5		1.5	0.22	12.2
	65KO-51.5		1.5	0.46	8.1
	65KO-52.2	65	2.2	0.46	11.0
	65KO-53.7		3.7	0.46	15.0
	65KO-57.5		7.5	0.6	22.5
	65KO-511		11.0	0.6	30.2
	65KO-515		15.0	0.6	36.9
	65KO-518		18.5	0.6	45.1
	80KO-51.5		1.5	0.8	4.6
	80KO-52.2	80	2.2	0.8	6.8
	80KO-53.7		3.7	0.8	10.8
	80KO-55.5		5.5	0.8	15.5
	80KO-57.5		7.5	0.6	22.5
	80KO-511		11.0	0.6	30.2
	80KO-515		15.0	0.6	36.9
	80KO-518		18.5	0.6	45.1
	100KO-53.7	100	3.7	1.4	7.3
	100KO-55.5		5.5	1.4	10.0
	100KO-57.5		7.5	1.4	14.8

Operating system	Type	Nominal diameter mm	Output kW	Specifications	
				Discharge rate m³/min	Total head m
Automatic	50KOA-5.75	50	0.75	0.22	6.7
	50KOA-51.5		1.5	0.22	12.2
	65KOA-51.5		1.5	0.46	8.1
	65KOA-52.2	65	2.2	0.46	11.0
	65KOA-53.7		3.7	0.46	15.0
	80KOA-51.5	80	1.5	0.8	4.6
	80KOA-52.2		2.2	0.8	6.8
	80KOA-53.7		3.7	0.8	10.8
	100KOA-53.7	100	3.7	1.4	7.3
	Automatic alternate/parallel operation*	50KOT-5.75	50	0.75×2	0.22
50KOT-51.5		1.5×2		0.22	12.2
65KOT-51.5		65	1.5×2	0.46	8.1
65KOT-52.2			2.2×2	0.46	11.0
65KOT-53.7		65	3.7×2	0.46	15.0
80KOT-51.5			1.5×2	0.8	4.6
80KOT-52.2		80	2.2×2	0.8	6.8
80KOT-53.7			3.7×2	0.8	10.8
100KOT-53.7		100	3.7×2	1.4	7.3

*Use a combination of KOT(Primary pump) and KOA (Secondary pump). This combination enables automatic alternate/parallel operation.

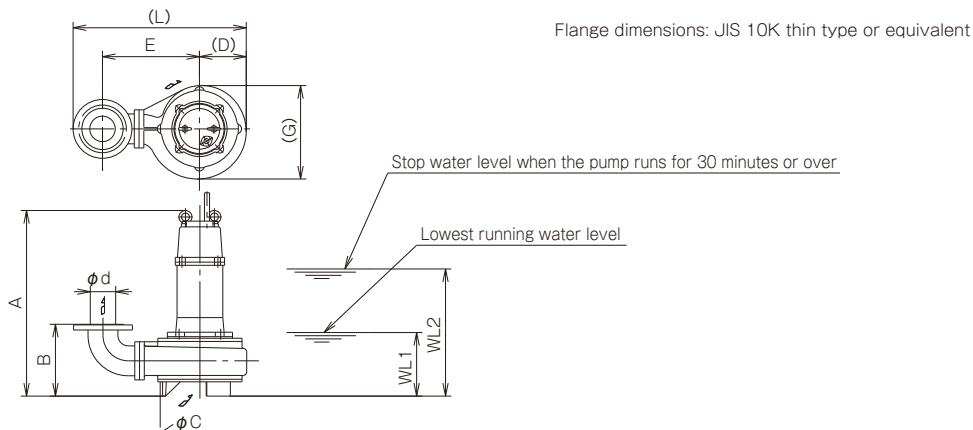
Motor specification table

Output kW	Type	Number of poles P	Phase and voltage V	Rating	Starting		Thermal class	Protector	Cable				
				Current A	Method	Current A			Type	Number of cores	Size mm²	Length m	Finishing outer diameter mm
0.75	Dry	4	3-phase/200V	4.0	Direct-on-Line	16.5	B	○	VCT	4	1.25	10	11.1
1.5	Dry	4	3-phase/200V	7.2	Direct-on-Line	31.7	B	○	VCT	4	1.25	10	11.1
2.2	Dry	4	3-phase/200V	10.3	Direct-on-Line	45.9	B	○	VCT	4	1.25	10	11.1
3.7	Dry	4	3-phase/200V	16.8	Direct-on-Line	80.1	F	○	VCT	4	2	10	11.8
5.5	Dry	4	3-phase/200V	23	Direct-on-Line	121	B	○	VCT	4	3.5	10	13.9
7.5	Dry	4	3-phase/200V	31	Direct-on-Line	183	B	○	VCT	4	5.5	10	16.5
11	Dry	4	3-phase/200V	45	Star-delta	217	F	×	VCT	3 4	3.5	10	12.6 13.9
15	Dry	4	3-phase/200V	58	Star-delta	327	F	×	VCT	3 4	5.5	10	15 16.5
18.5	Dry	4	3-phase/200V	72	Star-delta	428	F	×	2PNCT	3 4	8	10	16.7 18.4

Starting current of Star-delta starter is the value of Direct-on-line starting. (If this is made 1/3, it becomes the value when Star-delta starter.)

Assembly drawing

●Non-automatic KO

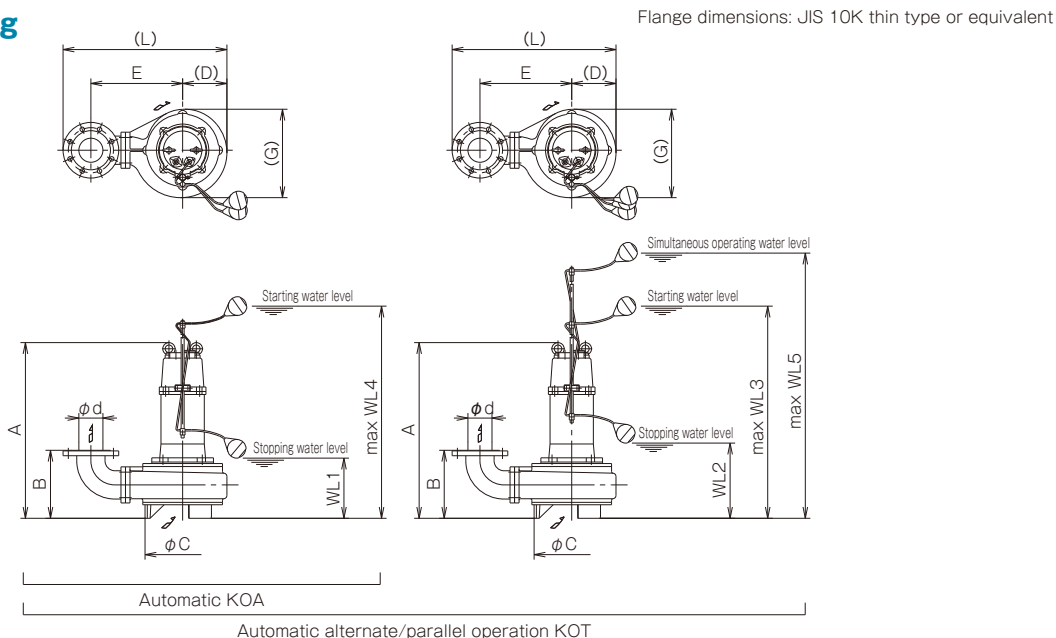


Dimensions

Nominal diameter d	Type	Output kW	Pump								Operating water level		Approx. mass kg
			A	B	C	D	E	G	L	WL1	WL2		
50	50KO-5.75	0.75	475	203	210	116	231	238	425	200	381	39	
	50KO-51.5	1.5	498	206	260	137	251	275	465	200	406	50	
65	65KO-51.5	1.5	518	216	250	141	261	282	490	200	426	53	
	65KO-52.2	2.2	542	225	280	151	281	311	520	200	436	59	
	65KO-53.7	3.7	577	225	280	151	281	311	520	200	471	65	
	65KO-57.5	7.5	741	263	355	201	331	401	619	350	700	165	
	65KO-511	11	820	293	355	201	341	401	629	350	780	192	
	65KO-515	15	838	293	410	228	369	460	684	350	780	230	
	65KO-518	18.5	888	293	410	228	369	460	684	350	830	245	
80	80KO-51.5	1.5	528	226	250	147	306	294	546	200	436	56	
	80KO-52.2	2.2	552	226	280	154	316	314	563	200	446	65	
	80KO-53.7	3.7	587	226	280	154	316	314	563	200	481	71	
	80KO-55.5	5.5	738	258	300	170	336	339	598	340	680	141	
	80KO-57.5	7.5	741	258	355	201	366	401	659	350	700	165	
	80KO-511	11	820	293	355	201	341	401	634	350	780	192	
	80KO-515	15	838	293	410	228	369	460	689	350	780	230	
100	80KO-518	18.5	888	293	410	228	369	460	689	350	830	245	
	100KO-53.7	3.7	607	288	280	170	316	337	591	200	501	77	
	100KO-55.5	5.5	748	310	300	171	311	341	587	350	690	145	
	100KO-57.5	7.5	748	310	300	171	311	341	587	350	690	158	

Assembly drawing

●Automatic KOA
●Automatic alternate/parallel operation KOT



Dimensions

Nominal diameter d	Type	Output kW	Pump								Operating water level					Approx. mass kg
			A	B	C	D	E	G	L	WL1	WL2	WL3	WL4	WL5		
50	50KOA (T)-5.75	0.75	540	203	210	116	231	238	425	200	250	1333	1433	1733	39	
	50KOA (T)-51.5	1.5	575	206	260	137	251	275	465	200	250	1373	1473	1773	51	
65	65KOA (T)-51.5	1.5	595	216	250	141	261	282	490	200	250	1393	1493	1793	54	
80	80KOA (T)-51.5	1.5	605	226	250	147	306	294	546	200	250	1396	1496	1796	57	

Note) Set the operating water level of KOT model to WL1<WL2<WL3<WL4<WL5 and make the water level difference in each float 50mm or more.

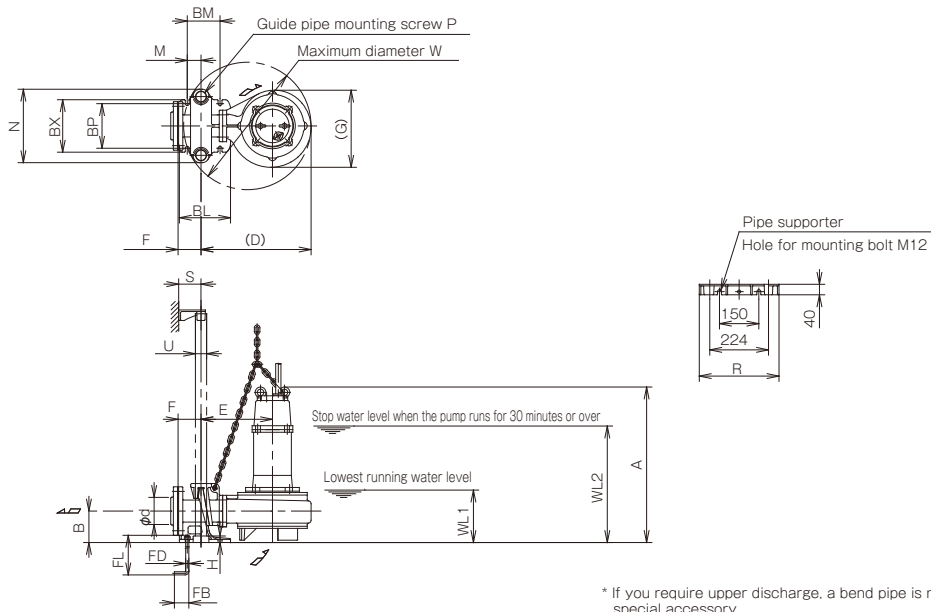
Approx. mass is for one unit.

Note 1) In case of KOT type, the required power supply capacity is equal to the motor output of 2 pumps.

Assembly drawing

Non-automatic KO + C-type detachable device

Flange dimensions: JIS 10K thin type or equivalent



* If you require upper discharge, a bend pipe is necessary as a special accessory.

Dimensions

(Unit: mm)

Nominal diameter d	Type	Output kW	Pump								Detachabale device				
			A	B	D	E	F	G	S	W	H	M	N	P	
50	50KO-5.75-C	0.75	513	120	349	233	84	238	75	410	20	51	275	Rp 1	
	50KO-51.5-C	1.5	532	120	389	253	84	275	75	448	20	51	275	Rp 1	
65	65KO-51.5-C	1.5	542	120	405	264	88	282	85	471	25	53	280	Rp 1 1/4	
	65KO-52.2-C	2.2	557	120	435	284	88	311	85	500	25	53	280	Rp 1 1/4	
	65KO-53.7-C	3.7	592	120	435	284	88	311	85	500	25	53	280	Rp 1 1/4	
	*65KO-57.5-C	7.5	769	170	548	347	104	401	95	610	25	59	290	Rp 1 1/2	
80	80KO-51.5-C	1.5	537	120	421	274	88	294	85	486	25	53	280	Rp 1 1/4	
	80KO-52.2-C	2.2	562	120	438	284	88	314	85	502	25	53	280	Rp 1 1/4	
	80KO-53.7-C	3.7	597	120	438	284	88	314	85	502	25	53	280	Rp 1 1/4	
	*80KO-55.5-C	5.5	766	170	487	317	104	339	95	554	25	59	290	Rp 1 1/2	
	*80KO-57.5-C	7.5	769	170	548	347	104	401	95	610	25	59	290	Rp 1 1/2	
100	100KO-53.7-C	3.7	639	170	492	322	104	337	95	557	25	59	290	Rp 1 1/2	
	100KO-55.5-C	5.5	758	170	488	317	104	341	95	554	25	59	290	Rp 1 1/2	
	100KO-57.5-C	7.5	758	170	488	317	104	341	95	554	25	59	290	Rp 1 1/2	

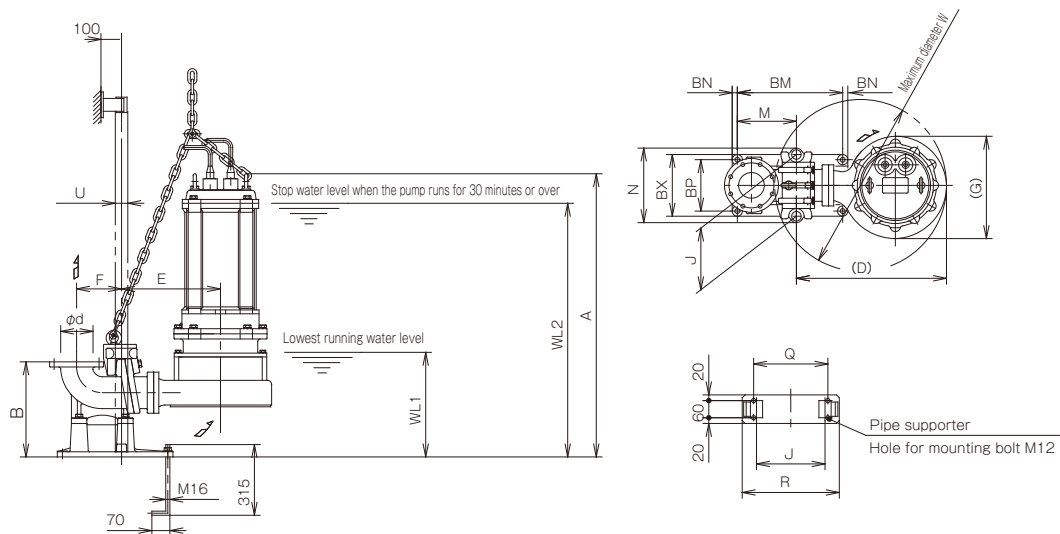
Nominal diameter d	Type	Detachabale device				Pipe supporter		Anchor bolt			Operating water level		Lifting mass kg
		BL	BM	BP	BX	R	U	FB	FD	FL	WL1	WL2	
50	50KO-5.75-C	170	115	130	160	304	25A	55	M12	250	200	421	39
	50KO-51.5-C	170	115	130	160	304	25A	55	M12	250	200	446	50
65	65KO-51.5-C	195	125	170	200	314	32A	55	M12	250	200	456	53
	65KO-52.2-C	195	125	170	200	314	32A	55	M12	250	200	446	59
	65KO-53.7-C	195	125	170	200	314	32A	55	M12	250	200	481	65
	*65KO-57.5-C	245	155	200	240	314	40A	70	M16	315	380	730	165
80	80KO-51.5-C	195	125	170	200	314	32A	55	M12	250	200	446	56
	80KO-52.2-C	195	125	170	200	314	32A	55	M12	250	200	456	65
	80KO-53.7-C	195	125	170	200	314	32A	55	M12	250	200	491	71
	*80KO-55.5-C	245	155	200	240	314	40A	70	M16	315	370	710	141
	*80KO-57.5-C	245	155	200	240	314	40A	70	M16	315	380	730	165
100	100KO-53.7-C	245	155	200	240	304	40A	70	M16	315	250	531	77
	100KO-55.5-C	245	155	200	240	314	40A	70	M16	315	360	700	145
	100KO-57.5-C	245	155	200	240	314	40A	70	M16	315	360	700	158

*Special flange is used.

Assembly drawing

Non-automatic KO + SEC-type detachable device

Flange dimensions: JIS 10K thin type or equivalent



Dimensions

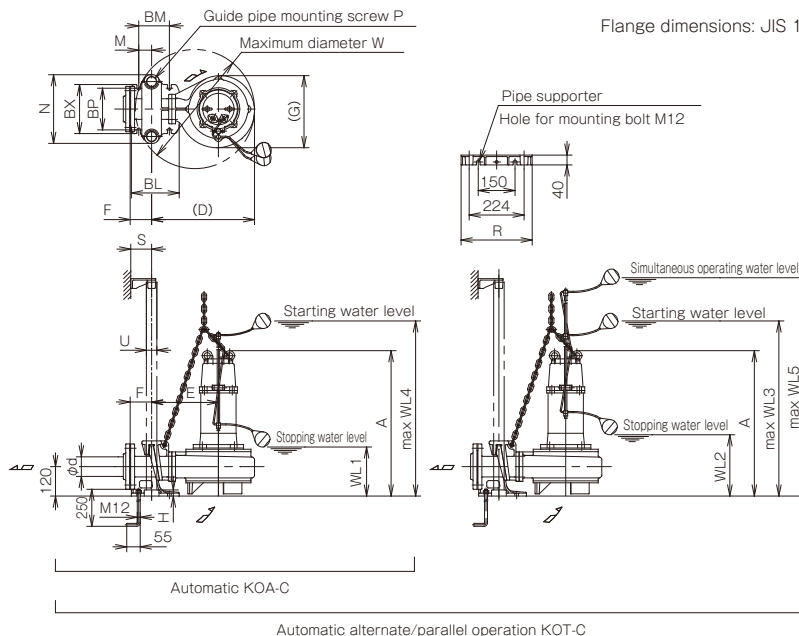
Nominal diameter d	Type	Output kW	Pump					Detachables device								Pipe supporter			Operating water level		Lifting mass kg	
			A	D	E	G	W	B	F	J	M	N	BM	BN	BP	BX	Q	R	U	WL1		WL2
65	* 65KO-511-S	11	928	577	376	401	661	370	155	240	230	290	410	20	200	240	260	340	40A	460	880	212
	* 65KO-515-S	15	946	632	404	460	715	370	155	240	230	290	410	20	200	240	260	340	40A	460	880	230
	* 65KO-518-S	18.5	996	632	404	460	715	370	155	240	230	290	410	20	200	240	260	340	40A	460	930	245
80	80KO-511-S	11	928	577	376	401	661	370	155	240	230	290	410	20	200	240	260	340	40A	460	880	192
	80KO-515-S	15	946	632	404	460	715	370	155	240	230	290	410	20	200	240	260	340	40A	460	880	230
	80KO-518-S	18.5	996	632	404	460	715	370	155	240	230	290	410	20	200	240	260	340	40A	460	930	245

*Special flange is used.

Assembly drawing

Automatic type (automatic alternate/parallel operation) KOA (T) + C-type detachable device

Flange dimensions: JIS 10K thin type or equivalent



* In you require upper discharge, a bend pipe is necessary as a special accessory.

Dimensions

Nominal diameter d	Type	Output kW	Pump								Detachables device								Pipe supporter		Anchor bolt					Operating water level					Lifting mass kg
			A	B	D	E	F	G	S	W	H	M	N	P	BL	BM	BP	BX	R	U	FB	FD	FL	WL1	WL2	WL3	WL4	WL5			
50	50KOA(T)-5.75-C	0.75	578	120	349	233	84	238	75	410	20	51	275	Rp1	170	115	130	160	304	25A	55	M12	250	200	250	1373	1473	1773	39		
	50KOA(T)-51.5-C	1.5	609	120	389	253	84	275	75	448	20	51	275	Rp1	170	115	130	160	304	25A	55	M12	250	200	250	1373	1503	1803	51		
65	65KOA(T)-51.5-C	1.5	619	120	405	264	88	282	85	471	25	53	280	Rp1¼	195	125	170	200	314	32A	55	M12	250	200	250	1413	1513	1813	54		
80	80KOA(T)-51.5-C	1.5	614	120	421	274	88	294	85	486	25	53	280	Rp1¼	195	125	170	200	314	32A	55	M12	250	200	250	1406	1506	1806	57		

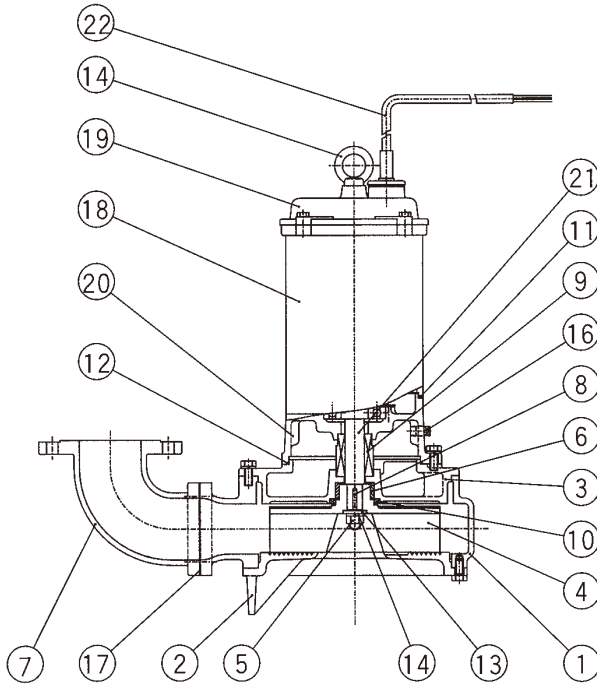
Note) Set the operating water level of KOT model to WL1 < WL2 < WL3 < WL4 < WL5 and make the water level difference in each float 50mm or more.

Approx. mass is for one unit.

Note 1) In case of KOT type, the required power supply capacity is equal to the motor output of 2 pumps.

Sectional drawing

Non-automatic KO Bore 50-100mm 1.5-3.7kW



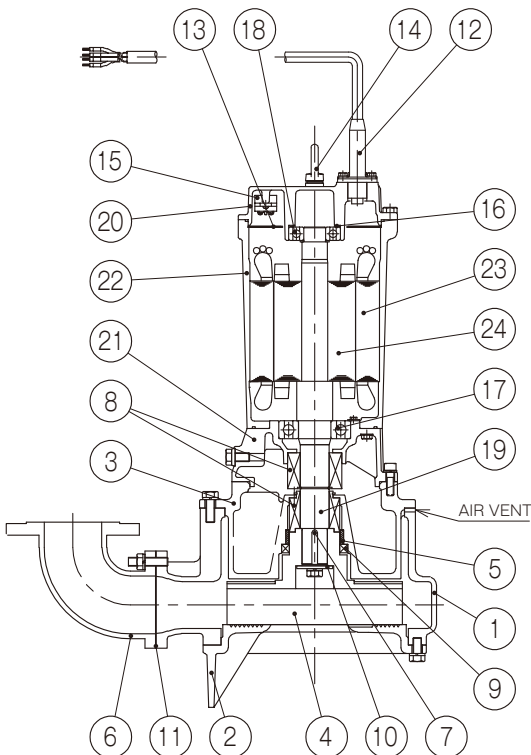
Lubricant
Turbine oil: #32

Parts list

No.	Part name	Qty	Material
1	Casing	1	FC200
2	Cutter disk	1	FCD450
3	Seal cover	1	FC200
4	Impeller	1	FC200
5	Impeller nut	1	SUS304
6	Bushing	1	CAC406
7	Discharge elbow	1	FC200
8	Key	1	SUS304
9	Mechanical seal	1	SiC vs SiC Ceramic vs Carbon
10	Oil seal	1	NBR
11	O-ring	1	NBR
12	O-ring	1	NBR
13	Washer	1	SUS403
14	Spring washer	1	SUS304
15	Eye bolt	2	SS400
16	Plug	1	SUS304
17	Gasket	1	Joint sheet
18	Motor frame	1	FC200
19	Protective cover	1	FC200
20	Lower bracket	1	FC200
21	Motor shaft	1	SUS403
22	Lead wire	1	VCT

Applicable model : 50KO-51.5 / 65KO-51.5 / 65KO-52.2 /
65KO-53.7 / 80KO-51.5 / 80KO-52.2 /
80KO-53.7 / 100KO-53.7

Non-automatic KO Bore 80-100mm 5.5-7.5kW

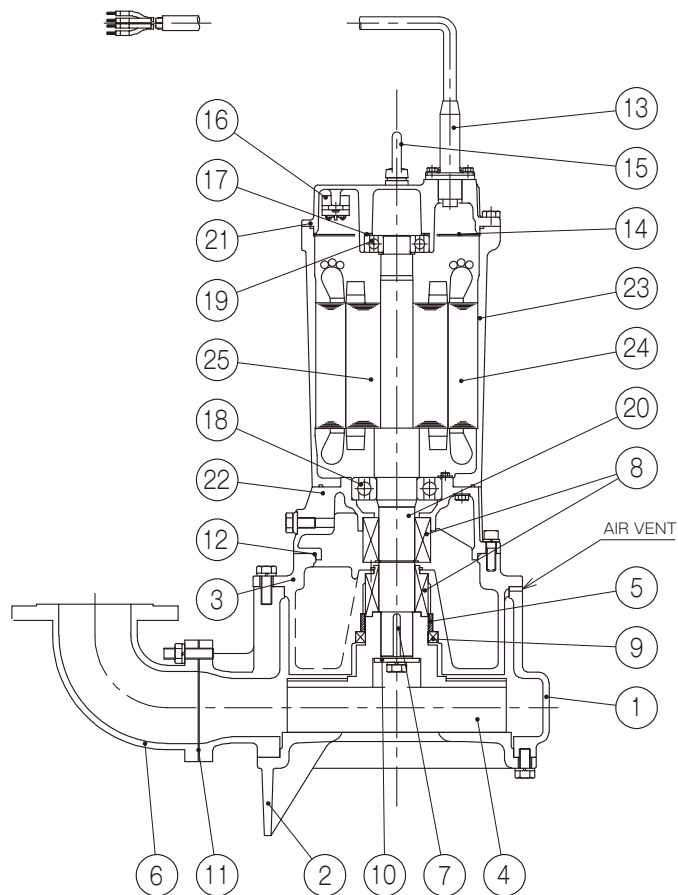


No.	Part name	Qty	Material
1	Casing	1	FC200
2	Cutter disk	1	FCD450
3	Seal cover	1	FC200
4	Impeller	1	FC200
5	Bushing	1	CAC406
6	Discharge elbow	1	FC200
7	Key	1	SUS304
8	Mechanical seal	1	SiC ~ SiC Ceramic vs Carbon
9	Oil seal	1	NBR
10	Washer	1	SUS304
11	Sheet packing	1	Synthetic paper
12	Lead wire	1	VCT
13	Baffle	1	Bakelite
14	Eye bolt	2	S25C
15	Protector	1	
16	Wave washer	1	S58C
17	Ball bearing	1	SUJ
18	Ball bearing	1	SUJ
19	Motor shaft	1	SUS420J1
20	Upper bracket	1	FC200
21	Lower bracket	1	FC200
22	Motor frame	1	FC200
23	Stator	1	
24	Rotor	1	

Applicable model : 80KO-55.5 / 100KO-55.5 / 100KO-57.5

■ Sectional drawing

● Non-automatic KO Bore 65-80mm 7.5kW

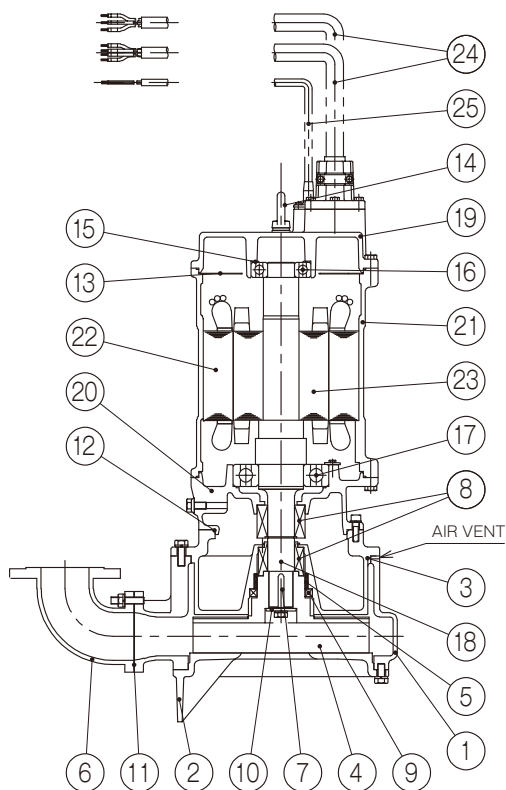


■ Parts list

No.	Part name	Qty	Material
1	Casing	1	FC200
2	Cutter disk	1	FCD450
3	Seal cover	1	FC200
4	Impeller	1	FCD450
5	Bushing	1	CAC406
6	Discharge elbow	1	FC200
7	Key	1	SUS304
8	Mechanical seal	1	SiC ~ SiC Ceramic vs Carbon
9	Oil seal	1	NBR
10	Washer	1	SUS304
11	Sheet packing	1	Synthetic paper
12	O-ring	1	NBR
13	Lead wire	1	VCT
14	Baffle	1	Bakelite
15	Eye bolt	2	S25C
16	Protector	1	
17	Wave washer	1	S58C
18	Ball bearing	1	SUJ
19	Ball bearing	1	SUJ
20	Motor shaft	1	SUS420J1
21	Upper bracket	1	FC200
22	Lower bracket	1	FC200
23	Motor frame	1	FC200
24	Stator	1	
25	Rotor	1	

Applicable model : 80(65)KO-57.5

● Non-automatic KO Bore 65-80mm 11-18.5kW

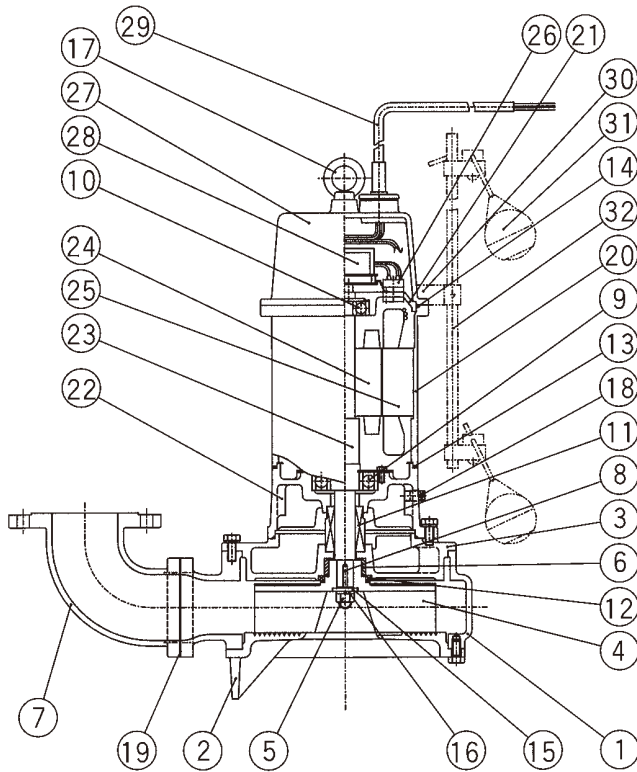


No.	Part name	Qty	Material
1	Casing	1	FC200
2	Cutter disk	1	FCD450
3	Seal cover	1	FC200
4	Impeller	1	FCD450
5	Bushing	1	CAC406
6	Discharge elbow	1	FC200
7	Key	1	SUS304
8	Mechanical seal	1	SiC ~ SiC Ceramic vs Carbon
9	Oil seal	1	NBR
10	Washer	1	SUS304
11	Synthetic paper	1	Synthetic paper
12	O-ring	1	NBR
13	Baffle	1	Bakelite
14	Eye bolt	2	S25C
15	Wave washer	1	S58C
16	Ball bearing	1	SUJ
17	Ball bearing	1	SUJ
18	Motor shaft	1	SUS420J1
19	Upper bracket	1	FC200
20	Lower bracket	1	FC200
21	Motor frame	1	FC200
22	Stator	1	
23	Rotor	1	
24	Lead wire (for power supply)	2	VCT/2PNCT
25	Lead wire (for signal)	1	VCT

Applicable model : 80(65)KO-511 / 80(65)KO-515 / 80(65)KO-518

Sectional drawing

Automatic KOA 1.5kW - 3.7kW



Lubricant
Turbine oil: #32

Parts list

No.	Part name	Qty	Material
1	Casing	1	FC200
2	Cutter disk	1	FCD450
3	Seal cover	1	FC200
4	Impeller	1	FC200
5	Impeller nut	1	SUS304
6	Bushing	1	CAC406
7	Discharge elbow	1	FC200
8	Key	1	SUS304
9	Ball bearing	1	SUJ2
10	Ball bearing	1	SUJ2
11	Mechanical seal	1set	SiC vs SiC Ceramic vs Carbon
12	Oil seal	1	NBR
13	O-ring	1	NBR
14	O-ring	1	NBR
15	Washer	1	SUS403
16	Spring washer	1	SUS304
17	Eye bolt	2	SS400
18	Plug	1	SUS304
19	Gasket	1	Joint sheet
20	Motor frame	1	FC200
21	Upper bracket	1	FC200
22	Lower bracket	1	FC200
23	Motor shaft	1	SUS403
24	Rotor	1	S40
25	Stator	1	S40
26	Protector	1	FC200
27	Protective cover	1	-
28	Control substrate	1	-
29	Lead wire	1	VCT
30	Support metal	1	SUS304
31	Float switch	2	ABS resin
32	Float supporter	1	PVC

Applicable model : 50KOA-51.5 / 65KOA-51.5 / 65KOA-52.2 /
65KOA-53.7 / 80KOA-51.5 / 80KOA-52.2 /
80KOA-53.7 / 100KOA-53.7



TERAL INC.

Head Office 230, Moriwake, Miyuki-cyo, Fukuyama-city, Hiroshima, 720-0003, Japan
Tel.+81-84-955-1111 Fax.+81-84-955-5777
www.teral.net

Teral Asia Limited

Room 1001,10/F, Olympia Plaza, 255 King's Road, North Point, Hong Kong
Tel.+852-2571-0935 Fax.+852-2571-0619

TERAL THAI CO.,LTD.

150 Moo 16 Udomsoraryuth Rd., T.Bangkrasan, A.Bangpa-In, Ayutthaya 13160 Thailand
Tel.+66-3535-2148-9 Fax.+66-3535-2150

TERAL TRADING & SERVICE CO.,LTD.

150 Moo 16 Udomsoraryuth Rd., T.Bangkrasan, A.Bangpa-In, Ayutthaya 13160 Thailand
Tel.+66-3535-2145-7 Fax.+66-3535-8549

PT.Teral Indonesia Pumps and Fans

Sinpasa Commercial Blok SB No 001
Jl. Boulevar Selatan Summarecon Bekasi
RT.003/RW.005, Kel. Marga Mulya, Kec. Bekasi Utara, Kota Bekasi, Jawa Barat 17142
TEL:+62-21-8949-4116

Teral Vietnam Limited Liability Company

9th Floor, LADECO Building, No.266 Doi Can Street, Ngoc Ha Ward, Hanoi City, Vietnam
Tel.+84-24-393-52-790 Fax.+84-24-393-52-289

Teral General Machine (Shanghai) Co.,Ltd.

No.285, Yuan Qu Road(N), Bei Qiao, Min Hang District, Shanghai 201109, China
Tel.+86-21-6490-9128 Fax.+86-21-6490-9126

Teral Middle East F.Z.C.

1806-002, 18th floor, BB1, Mazaya Business Avenue, JLT, Dubai, UAE. PO Box 414781
Tel.+971-4369 9039

Teral Pumps & Fans North America Ltd.

Suite # 197, 800-15355 24 Ave Surrey, B.C., CANADA V4A 2H9
Tel.+1-604-839-1008